

# Appendix

## Localities of collecting trip in Ethiopia, GTI2 (October 10-30, 2011)

By

**Alain PAULY\***, **Jean-Luc BOEVE\***, **Seyoum MENGISTOU\*\***,  
**Zewdu Hora ARARSO\*\*\*** & **Ketema AMBERBIR\*\***

\* *Royal Belgian Institute of Natural Sciences, Department Entomology, Rue Vautier 29, B-1000 Brussels, Belgium. alain.pauly@brutele.be*

\*\* *Zoological Natural History Museum, University of Addis Abeba, Ethiopia.*

\*\*\* *Holeta Bee Research Center, Holeta, Ethiopia.*



*Landscape from Chenek camp, Simien Mountains*

November 18, 2011

12.X.2011

1) Sebeta, 8°54'23.8" N 38°35'26.7" E, 2166m, on *Bidens prestinaria*, *Solanum incanum*, *Nicandra physalodes*, *Echinops hispidus*. Yellow pan traps.



*Bidens prestinaria* (Asteraceae)



*Solanum incanum* (Solanaceae)



*Echinops hispidus* (Asteraceae)



*Nicandra physalodes* (Solanaceae)

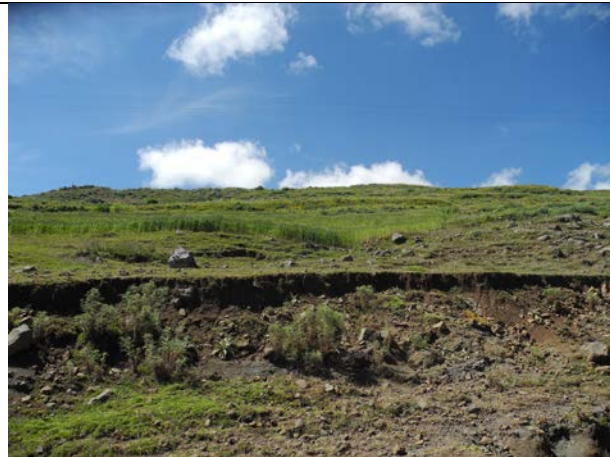
2) Sebeta, San Mary, (no GPS), on *Achyranthes aspera* and cabbage crops.



13.X.2011

3) Fiche, 9°47'29.1" N 38°41'02.6" E, 3040m, on *Trifolium ruepellianum* and *Bidens macroptera*.

4) Fiche, 9°47'44" N 38°40'48" E, 3073m, crops of *Guizotia abyssinica*, on *Bidens macroptera* and *Plectranthus lanuginosus*



*Plectranthus lanuginosus* (Lamiaceae)

*Bidens macroptera* (Asteraceae)



Crop of *Guizotia abyssinica*

*Guizotia abyssinica* (Asteraceae)

5) Goha Tsiyon, before Abay Gorge (= Blue Nile Gorge), 10°01'31.8"N 38°14'43.3", 2484m, on *Plectranthus lanuginosus*, *P. ornatus* and *Achyranthes aspera*.



Vue on Blue Nile Gorge



*Plectranthus lanuginosus* (Lamiaceae)

6) Abay Gorges, 1337m, 10°05'38.7" N 38°11'19.6" E, on *Flaveria trinervia* and *Tridax procumbens*



Landscape in Abay Gorge



*Flaveria trinervia* (Asteraceae)

7) Abay Gorges, 10°08'29.7" N 38°09'54.0" E, 2237m, on cultivated *Brassica*.



8) Before Debre Markos,  $10^{\circ}16'59.9''$  N  $37^{\circ}46'54.0''$  E, 2464m, *Brassica* in maize crop



14.X.2011

9) road to Mt Choke,  $10^{\circ}32'32.4''$  N  $37^{\circ}45'28.8''$  E, 2918m, on *Brassica*

10) road to Mt Choke,  $10^{\circ}32'50.2''$  N  $37^{\circ}46'06.1''$  E, 3146m, on *Senecio* sp.



11) road to Mt Choke,  $10^{\circ}34'49.2''$  N  $37^{\circ}47'14.8''$  E, 3261m, on *Senecio* sp. and *Brassica*.



Senecio sp. (Asteraceae)

12) Debre Markos, 10°22'30.8" N 37°44'15.8" E, 2536m, crops.

13) Embuli near Dembecha, 10°31'03.8" N 37°31'39.9" E, 2146m, along small stream, on *Brassica*, *Trifolium rueppelianum*, *Bidens prestinaria*.

14) Bure, 10°47'50.8" N 37°03'16.1" E, 2559m, humid crops with Fabaceae and *Brassica*, on *Trifolium rueppelianum* and *Justicia schimperana*.



15.X.2011

15) Blue Nile Falls (= Tis Abay Falls), 11°29'10.8" N 37°35'40.3" E, 1616m, on *Cassia alata*, *Justicia schimperana*, *Lagenaria abyssinica*, *Cordia africana*, *Ipomoea tenuirostris*.



K.A, J-L. B, Z.A. and A.P. at Blue Nile Falls



Landscape near Blue Nile Falls



Bush of *Cassia alata*



*Cassia alata* (Caesalpinaceae)



*Lagenaria abyssinica*, fruits and flowers  
(Cucurbitaceae)



*Cordia africana* (Boraginaceae)

16) Hamusit, N. Bahir Dar, 11°42'09.8" N 37°29'39.6" E, 1890m, on *Brassica*.

17) Lake Tana, near Werota, 11°50'31.1" N 37°38'14.5" E, 1809m, on *Ipomoea* in swamps.



*Ipomoea* sp. (Convolvulaceae)

18) Near Emfraz Guarza, 12°09'32.7" N 37°44'06.4" E, 2112m, small forest, by sweeping.



16.X.2011

19) Amba Giyorgis, 12°46'49.3" N 37°38'23.1" E, 2855m, on *Salvia schimperi* and *Silybum marianum* (not visited by bees).



*Silybum marianum* (Asteraceae)



20) Godibedjei, 12°47.47.5" N 37°41'23.0" E, 2698m, on *Bidens prestinaria* and cultivated *Brassica*.

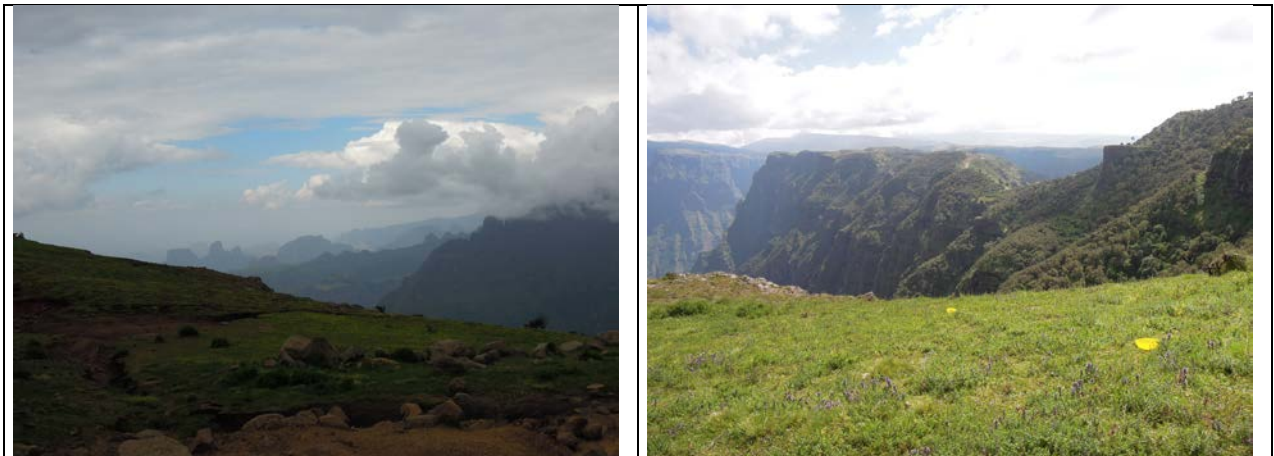


21) Dabat, 12°56'23.7" N 37°44'46.6" E, 2618m, crops, on *Guizotia scabra*.



17.X.2011

22) Simien Mountains, near Sankaber Camp, 13°13'55.0" N 38°01'23.0" E, 3252m, montane grassland with *Trifolium acaule* and Lamiaceae. Collection using yellow pan traps and net.





*Erica arborea* (Ericaceae)



Lamiaceae



Lamiaceae



Dense carpet of *Trifolium acaule*



*Trifolium acaule* (Fabaceae)



*Bidens macroptera* (Asteraceae)



*Cyanotis* sp. (Commelinaceae)

23) Simien Mountains, near Sankaber Camp, 13°13'34.1 N 38°01.47.3" E, 3191m, escarpment with *Ferula communis*.





*Ferula communis* (Apiaceae)

24) Simien Mountains, near Sankaber Camp, 13°13'55.7" N 38°02'28.8" E, 3203m, on red Liliaceae and *Pterocephalus frutescens*. (also on 18.X).



Grassland with *Pterocephalus frutescens* (Dipsacaceae)



Liliaceae



*Hebenstretia dentata* (Scrophulariaceae)



Liliaceae



*Pterocephalus frutescens* (Dipsacaceae)

25) Simien Mountains, near Chennek Camp, 13°14'.37.2" N 38°09'15.0" E, 3690m, on *Kniphofia foliosa*.



*Kniphofia foliosa* (Liliaceae)



Boraginaceae



*Senecio* sp.



*Carduus camaecephalus* (Asteraceae)

25bis) Simien Mountains, Bwahit Pass, 4400m altitude.



4400m



4400m



4200m, giant *Lobelia*



4200m



4200 m, giant *Lobelia*



4200 m, landscape with an Abyssinian ibex (*Walya ibexes*)



4200 m



*Helichrysum* sp.



*Helichrysum*



18.X.2011

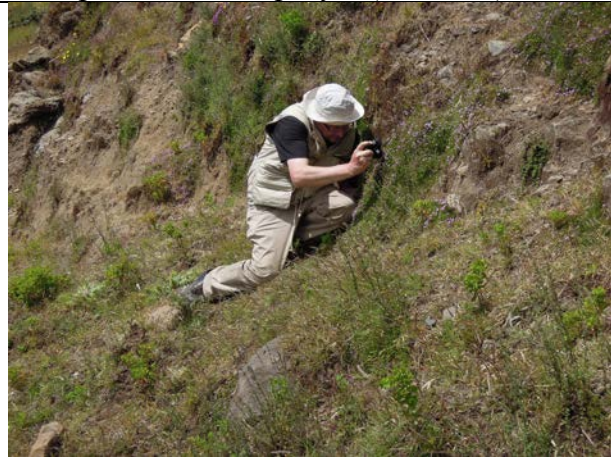
26) Simien Mountains, near Chennek Camp, 13°14'53.0" N 38°10'07", 3575m, escarpment with blue Lamiaceae, *Euphorbia schimperiana*, *Kniphofia foliosa*, *Trifolium acaule*, *Cirsium* sp., *Conyza steudelli*. Collection by yellow pan traps and nets.



Escarpment with *Kniphofia* (Liliaceae)



*Kniphofia foliosa* with *Afrodialictus*



*Trifolium acaule* (Fabaceae)







*Echinops* sp. (Asteraceae)

*Carduus* sp. (Asteraceae)



Asteraceae



Asteraceae

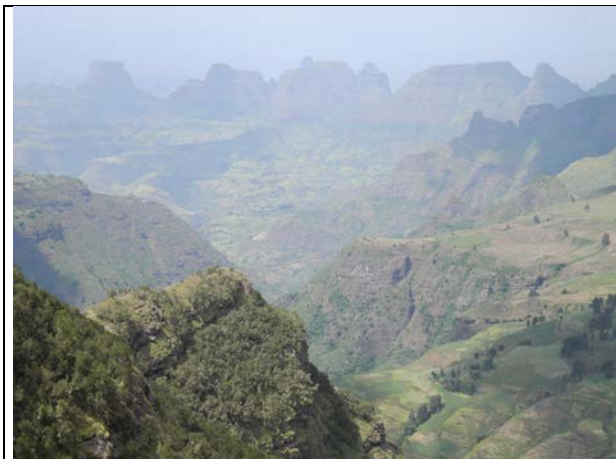


*Euphorbia schimperiana* (Euphorbiaceae)



*Euphorbia schimperiana*

27) Simien Mountains, Chenek Camp , 13°15'43.4" N 38°11'36.8" E, 3607m, on *Trifolium acaule*. *Helichrysum* sp. and *Erica arborea* (not visited by bees).





Boraginaceae



Asteraceae



*Erica arborea*

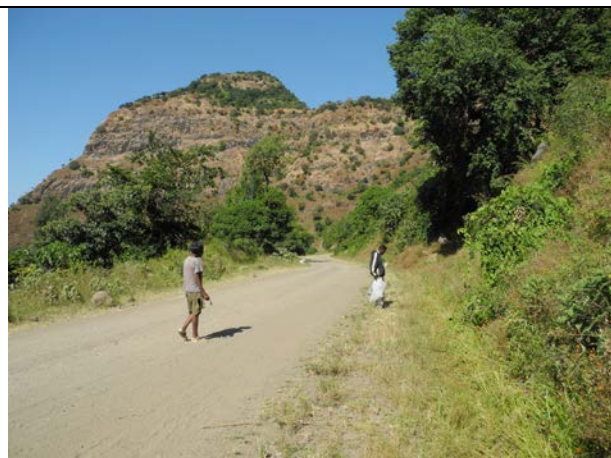


*Erica arborea*

(24 bis): see 17.X

19.X.2011

28) Chew Ber, SW Bermaryam, 13°22'N 37°57'E (map, not GPS), 1726m (GPS), on *Geranium* sp., *Guizotia scabra*.





*Glycine wightii* (Fabaceae)

*Glycine wightii*



*Geranium* sp. (Geraniaceae)



*Leonotis ocymifolia* (Lamiaceae)

28bis) Crops with Striga (pink flowers) between Zarima and Bermaryam



Sorghum crops with *Striga*



*Sorghum*



*Striga* sp. (Orobanchaceae)



*Striga* sp.

29) Zarima, 13°20'19.0" N 37°53'22.8" E, 1261m, bed of river Zarema Shet, on *Persicaria setosula*.





*Persicaria setulosa* (Polygonaceae)

30) N. Debark, 13°15'32.4" N 37°52'57.9" E, 1894m, spring, by sweeping.

31) Limalimo, N. Debark, 13°13'46.2" N 37°53'13.1" E, 2153m, escarpment with forest, on *Bidens prestinaria*, *Commelina bengalensis*.



20.X.2011

32) Teda, near Maksegnit, 12°29'14.0" N 37°26'50.5" E, 1924m, river bank, on *Crassocephalum sarcobasis* (Asteraceae).



33) Near Emfraz Guarza, 12°09' N 37°44'E, 2080m, on *Achyranthes aspera* and *Cassia alata*.



*Cassia alata* (Caesalpiniaceae)

34) Work Amba, near Waroda (= Werota), Chinese road, 11°55'58.1" N 37°49'06.7" E, 1957m, on *Corandrium sativum* and *Solanum incanum*.



*Corandrium sativum* (Apiaceae)

35) Debre Tabor, 11°54'44.8" N 37°57'06.6" E, 2322m, on *Guizotia scabra* and *Cassia*.



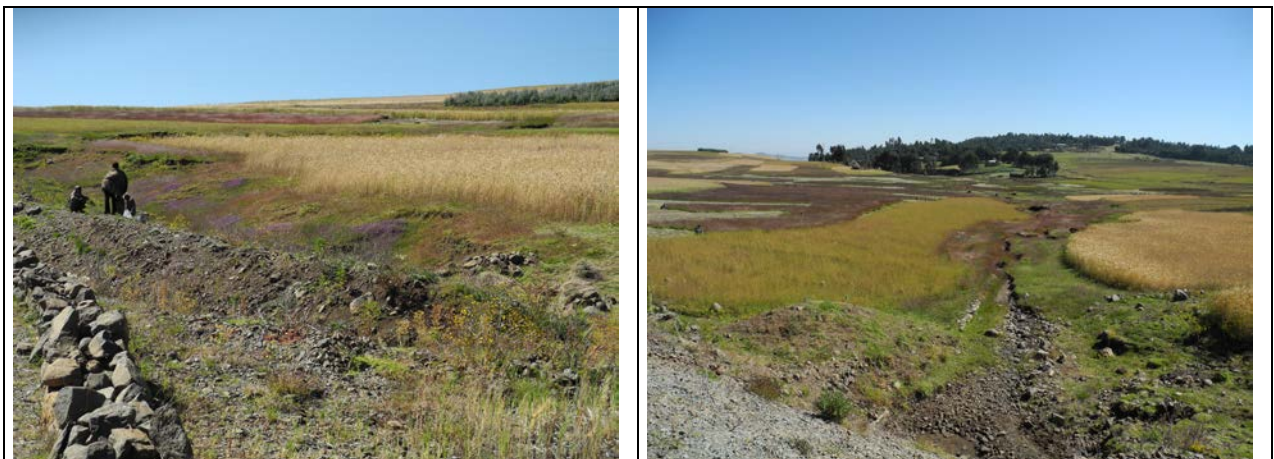
36) Debre Tabor, 11°51'28" N 38°00'17"E, 2691m, hotel, at light.

21.X.2011

37) Chinese road near Mt Guna, 11°44'46.6" N 38°18'42.7" E, 3125m, on *Brassica*.



38) Nefas Meewcha, Tach Gyant, 11°44'23.2" N 38°25'06.2" E, 3115m, along small stream, on *Guizotia scabra*.





39) Nefas Meewcha, 11°45'21.1" N 38°29'10.5" E, 2900m, on *Plectranthus ornatus*, *Plectranthus lanuginosus* and *Aloe berhana*.



40) Mekit near Nefas Meewcha, 11°45'21.6" N 38°30'25.3" E, 2789m, on *Guizotia scabra*.



22.X.2011

41) Lalibela, 12°09'16.1" N 38°58'43.1" E, 2153m, on *Hypoestes forskalii*.

42) N. Bilibala, 12°13'10.6" N 39°00'51.6" E, 2159m, on *Pulicaria undulata*, *Launea cornuta*, *Achyranthes aspera*.



*Launea cornuta* (Asteraceae)



*Pulicaria undulata* (Asteraceae)



Asteraceae



*Rumex nervosus* (Polygonaceae)

43) Between Bilibala and Asketema, 12°13'26.9" N 39°02'04.2", 1999m, on *Pulicaria undulata*, *Hypoestes forskalii*, *Glycine wightii*, *Rumex nervosus*.





*Hypoestes forskalii* (Acanthaceae)



*Achyranthes aspera* (Amaranthaceae)

43bis) Lalibela, *Xylocopa flavorufa* on *Justicia schimperana*



23.X.2011

44) S. Lalibela, 11°47'52" N 38°55'10" E, 1975m, *Acacia* woodland.



*Acacia* in teff crop



*Acacia seyal* (Mimosaceae)



Teff crop with *Carthamus tinctorius*



*Carthamus tinctorius* (Asteraceae)

45) Digua, 60 km S. Lalibela, 11°43'17.2"N 38°55'19.5", 2475m, on *Plectranthus ornatus*.



*Plectranthus ornatus* (Lamiaceae)

46) Denssa, 11°54'08.8" N 39°20'18.0" E, 3451m, on *Senecio lyratus*





Asteraceae



Senecio sp.



Asteraceae



Brassicaceae

24.X.2011

47) Harego, Kembolcha, 11°06'11.4" N 39°39'58.4", 2063m, on *Guizotia abyssinica*, *Cassia alata*, *Justicia heterocarpa*, *Hypoestes forskalii*, *Euphorbia candelabrum*..



*Calotropis procera* (Asclepiadaceae)



*Calotropis procera*



*Euphorbia candelabrum* (Euphorbiaceae)



*Euphorbia candelabrum*

25.X.2011

48) Debre Sina, Tarmaber Pass, 9°50'12.3"N 39°44'27.4"E, 3167m, on *Trifolium rueppellianum* and *Anthemis tigreensis*.



*Rumex nepalensis* (Polygonaceae)



*Anthemis tigreensis* (Asteraceae)

26.X.2011

49) Mt Entoto, 9°05'09.5" N 38°45'36.0" E, 2850m, on *Bidens prestinaria*, *Achyranthes aspera* and *Argyrolobium ramosissimum*.



*Bidens prestinaria* (Asteraceae)

*Argyrolobium ramosissimum* (Fabaceae)

27.X.2011

50) Abossa, Rift Valley, near Lake Ziway, 08°00'10.0" N 38°43'27.5" E, 1667m, sands, on *Hypoestes forskalii*.



Sands with *Hypoestes forskalii*





*Hypoestes forskaolii*



*Hypoestes forskaolii*

51) Bulbula, 7°46'15.4" N 38°39'03.6" E, 1648m, along the main road on *Ocimum urticifolium*.



The Abiyata-Shala-Hayak National Park



The Abiyata-Shala-Hayak National Park



*Ocimum urticifolium* (Lamiaceae)

52) Langano Lodge near Lake Langano, 7°36'59.8"N 38°40'48.4" E, 1631m, on *Leucas abyssinica*, *Ocimum urticifolium*, *Hypoestes forskaolii*.



*Leucas abyssinica* (Lamiaceae)



*Leucas abyssinica*



*Leucas abyssinica*



*Leucas abyssinica*

28.X.2011

53) Great Rift Valley, Gallo, on small road between Ziway and Ziwa, 7°59'47.0" N 38°38'46.1" E, 1690m, on *Launea cornuta* in wheat crop and *Hypoestes forskalii*.





Wheat crop with *Launaea cornuta* (Asteraceae)

54) Dilela, between Gogetti and Tiya, 8°14'27"N 38°29'02", 1905m, on *Cassia alata* and *Caesalpinia decapetala*.



*Caesalpinia decapetala* (Caesalpinaceae)